



NEO LITE

The beautiful lines of Neo Lite create an comfortable bar stool which looks interesting and 'enlivening' regardless of from which direction you look at it. Behind the clean, self-explanatory design lies a solid piece of workmanship. All the details have been carefully tested and reviewed. Seat shell in polypropylene in CbM*. Base in chrome alt. silver grey or CbM* powder coating. The Neo Lite range also includes exclusive conference chairs as well as chairs and armchairs in different variants.



*CbM = beige, mustard yellow, dusty pink, rusty red, burgundy red, blue grey, green, grey, dark grey, black and white



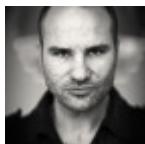
The mark of
responsible forestry



VARIANTS

	W	D	H	SH
	555 mm	460 mm	830 mm	630 mm
	555 mm	460 mm	980 mm	780 mm

DESIGNER



Fredrik Mattson